

MEMMO CENTER

Type	8 rooms	Sector	Fontvieille
Floor	0	View	Cap d'Ail Harbour
Living space	387 m ²	Exposure	Sud - East
Outer surface	780 m ²	Parking	4
Total surface	1167 m ²	Cellar	2

Rent **48 000 €**

Charges **7 500 € / month**

Description

Fontvieille - 4, avenue des Guelfes

8 rooms, ground floor, entrance B

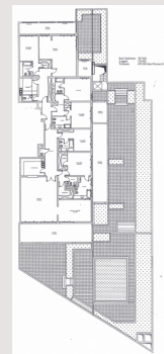
SURFACE: 387sqm (habitables) + 780sqm (loggia) = 1167sqm.

PRIVATE POOL

Building with concierge 24h/24, and fitness...

Entrance hall, 2 fitted kitchens, 2 living rooms, dining room, 5 bedrooms, dressing rooms, cupboards, 6 bathrooms, 2 guest toilets, terrace, loggias.

2 Cellars & 4 Parkings.



Non-contractual Photographs and Documents - Available unless sold or withdrawn from sale

La Réserve • 5, Avenue Princesse Grace
Fairmont Monte Carlo • 12, Avenue des Spélugues

Tél. + 377 93 50 51 52
Tél. + 377 92 16 72 33

Fax. + 377 93 50 87 55
Fax. + 377 93 50 82 52

Correspondance: B.P. N° 353 - MC 98006 MONACO CEDEX • E. Mail. cpp@palmero.mc

S.a.r.l. Cabinet P. Palméro
Capital social : 50.000 €
RCS 03 S 04161 • I.I. : FR57000064229 • S.s.e.e. : 6831Z10768

en application de la Loi 1 165 du 23/12/1993 modifiée vous disposez d'un droit d'accès et de rectification