

## GIOTTO

Type	2 bedrooms	Sector	Fontvieille
Floor	0	View	Garden & Harbor
Living space	136 m <sup>2</sup>	Exposure	North
Outer surface	6 m <sup>2</sup>	Parking	0
Total surface	142 m <sup>2</sup>	Cellar	1

Selling price

**5 500 000 €**

Description

**GIOTTO**Fontvieille - 2, avenue des Papalins

**3 rooms, garden level** (equivalent to the 3rd floor)

**SURFACE: 136sqm (inside) + 6sqm (loggia) = 142sqm.**

Entrance, fitted kitchen, laundry room, living room, 2 bedrooms, dressing rooms, 2 bathrooms, loggia.  
1 Cellar.

Mixed use.

Non-contractual Photographs and Documents - Available unless sold or withdrawn from sale

La Réserve • 5, Avenue Princesse Grace  
Fairmont Monte Carlo • 12, Avenue des Spélugues

Tél. + 377 93 50 51 52  
Tél. + 377 92 16 72 33

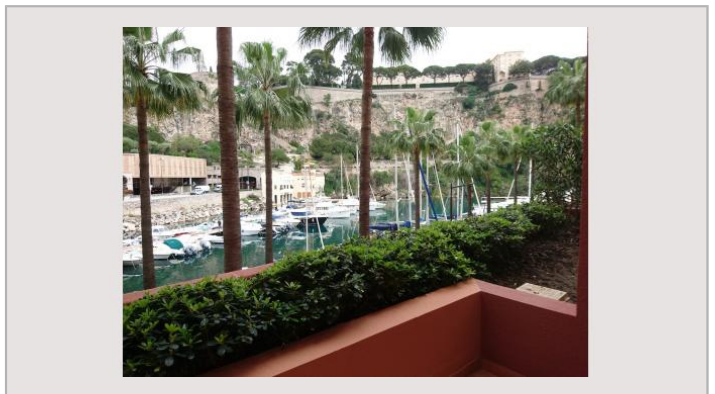
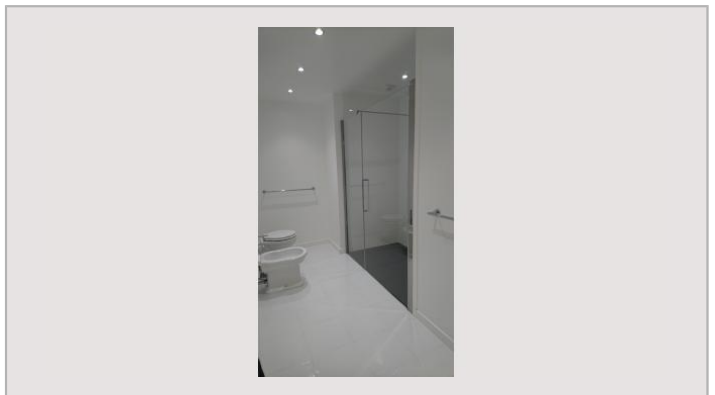
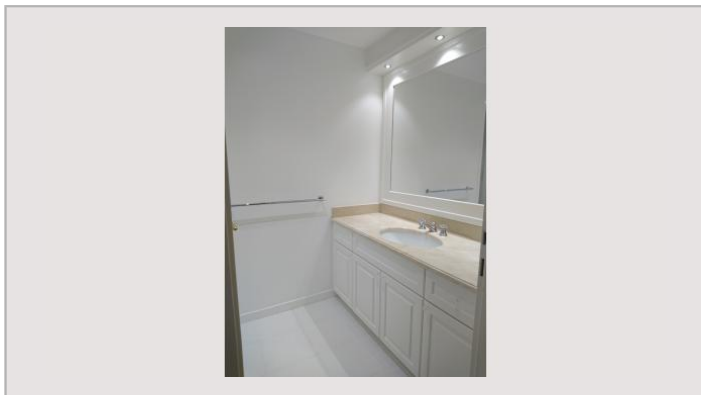
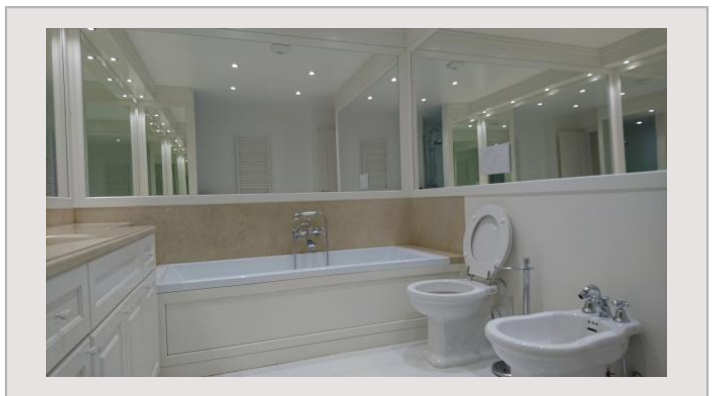
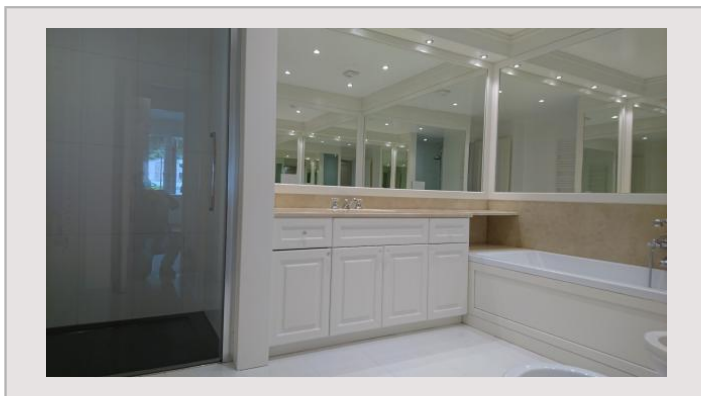
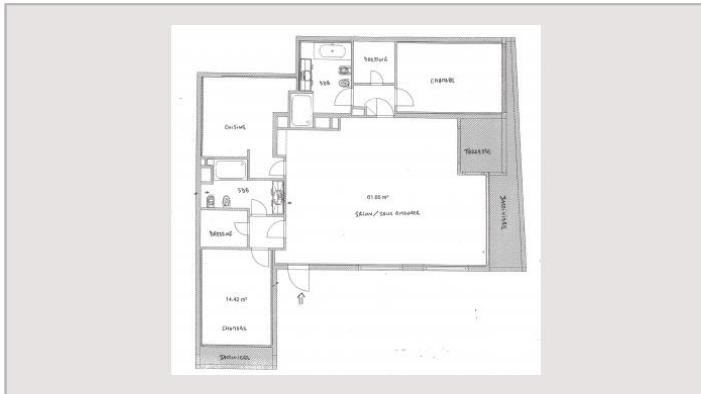
Fax. + 377 93 50 87 55  
Fax. + 377 93 50 82 52

Correspondance: B.P. N° 353 - MC 98006 MONACO CEDEX • E. Mail. cpp@palmero.mc

S.a.r.l. Cabinet P. Palmero  
Capital social : 50.000 €  
RCS 03 S 04161 • I.I. : FR57000064229 • S.s.e.e. : 6831Z10768

en application de la Loi 1 165 du 23/12/1993 modifiée vous disposez d'un droit d'accès et de rectification

GIOTTO



Non-contractual Photographs and Documents - Available unless sold or withdrawn from sale

La Réserve • 5, Avenue Princesse Grace  
Fairmont Monte Carlo • 12, Avenue des Spélugues

Tél. + 377 93 50 51 52  
Tél. + 377 92 16 72 33

Fax. + 377 93 50 87 55  
Fax. + 377 93 50 82 52

Correspondance: B.P. N° 353 - MC 98006 MONACO CEDEX • E. Mail. [cpp@palmero.mc](mailto:cpp@palmero.mc)

S.a.r.l. Cabinet P. Palmero  
Capital social : 50.000 €  
RCS 03 S 04161 • I.L. : FR57000064229 • S.s.e.e. : 6831Z10768

en application de la Loi 1 165 du 23/12/1993 modifiée vous disposez d'un droit d'accès et de rectification